

SIID Free-Vend Switch Kit E004.1

MODELS AFFECTED: All 5, 6, 7, & 8 select non-membrane SIID venders with 57x521-2 or 57x560-1 software or higher.

NOTE: WILL NOT work with membrane select switch panel.

PURPOSE: To allow Customers to put an SIID vender in free-vend mode with the use of an external key switch and to keep track of those free vends.

ORDER: 1 - 491,742,60x.x4 SIID Free-Vend Switch Kit

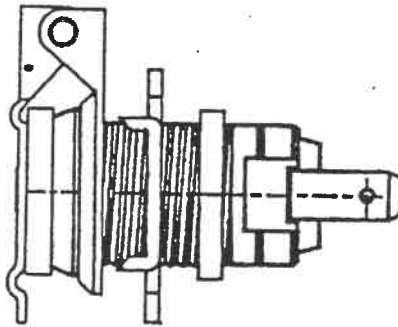
Kit Contents:

1 - 801,510,10x.x1 Lock-Out Switch Assembly
1 - 804,910,68x.x1 Free Vend Switch Harness

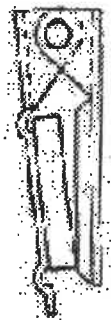
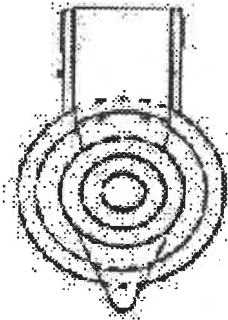
To Install:

1. Unplug the vender.
2. Choose the location you wish to mount the lock-out switch. Important: Keep in mind the free-vend switch lead is about 85 inches long.
3. Drill a 25/32" hole through the door at the chosen location.
CAUTION: DO NOT drill through any wiring or parts.
4. Remove the retaining nut and lock washer from the lock-out switch.
5. Place the lock-out switch in position.
6. Install the lock washer on the lock-out switch so the teeth of the washer will bite in the door metal.
7. Secure the lock-out switch with the retaining nut that was removed in step number 4.
8. Plug the free-vend switch leads to the lock-out switch.
9. Run the free-vend switch lead harness to the area of the SIID control board.
10. Locate the SIID control board and the select switch connector. See P4, figure 2.
11. Remove the select switch connector (P4).
12. Plug one end of the free-vend switch lead into the empty select switch connector pin number 10. See view "A", figure 2.
13. Plug the other free vend switch lead into the empty select switch connector pin number 13. See view "A", figure 2.

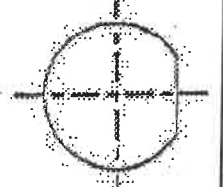
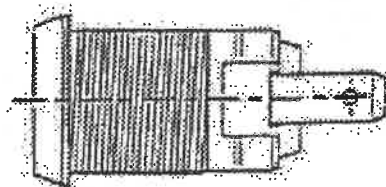
14. Plug the vender back in the wall outlet.
15. Press the service switch located on the SIID control board.
16. Go to the programming item "FREE" in the menu.
17. Press select button 1 will show whether the feature is enabled or disabled. Press and hold select button 1 until the display shows "ENABLED".
18. After the free-vend feature has been used, pressing select button 2, while at the "FREE" prompt, will show the number of free products given away.
19. Press select button 3, while at the "FREE" prompt, will clear the free-vend counter.
20. Close the door and return to Normal Operating Mode.
21. To enable free-vend, simply turn the lock-out switch.
22. To not allow free vends, even if the switch is present, return to the "FREE" programming item and hold select switch 1 until "DISABLED" appears on the display.



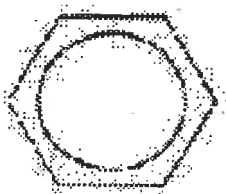
801,510,10x.x1
Lock-Out Switch Assembly
Figure 1



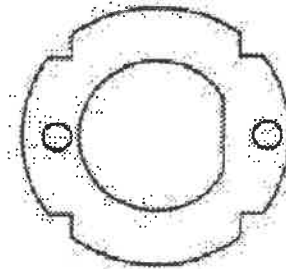
Dust Cover
A 801,510,35x.x1



Lock-Out Switch
A 801,510,11x.x1



Hex Nut
A 801,510,12x.x1



Steel 4-Prong Washer
A 801,510,13x.x1